

LEGAL NOTICES

LEGAL NOTICES

LEGAL NOTICES

LEGAL NOTICES

**Planning and Development Act 2000, as amended
Notice of Direct Planning Application to An Coimisiún Pleanála
Strategic Infrastructure Development
Leitrim County Council**

In accordance with Section 37E of the Planning and Development Act 2000, as amended, we, FuturEnergy Lissinagroagh Designated Activity Company, give notice of our intention to apply to An Coimisiún Pleanála for a 10 year planning permission for the proposed renewable energy development of a wind farm with a development boundary for infrastructure of 170.5 ha within an overall boundary of 389 ha including biodiversity enhancement lands in the townlands of Boleyboy, Cashelaveela, Cherrybrook, Coolodonnell, Faughary, Killea, Lissinagroagh, Lisdarush, Lugasnaghta, Raheelin, Shasmore, Tawnyfeacle, and Tullyshehery, Co. Leitrim.

The Proposed Development for which permission is sought will comprise:

- Fourteen (14) wind turbines with a blade tip height range of 180 m to 185 m inclusive, a rotor diameter range from 149 m to 163 m inclusive, a hub height range from 101 m to 110.5 m inclusive, a minimum ground clearance of 22 m, and all associated foundations, hardstanding and assembly areas;
- A permanent meteorological mast with a height of 100 m, with a lightning finial extending above the mast;
- Modifications to an existing site access on the L61801 local road in the townland of Faughary in the west of the site, to be used as a permanent access during construction and operation;
- A new temporary access on the L6184 local road in the townland of Cherrybrook for use by turbine delivery vehicles during construction only, and subsequent reinstatement;
- Modifications to an existing site access on the L61844 local road in the townland of Lissinagroagh in the southeast of the site, to be used as a temporary access during construction phase only;
- Approximately 7.95 km of new internal access tracks to include passing bays and associated drainage;
- Upgrade of approximately 8.35 km of existing access tracks, to include passing bays and associated drainage;
- Temporary and permanent drainage and sediment control systems;
- Ten (10) clear span bridges and one (1) existing culvert extension at watercourse crossings by access tracks;
- Three (3) borrow pits with a total available area of 63,352 m² for temporary use during construction. The borrow pits will subsequently be used for storage of excavated material;
- Two (2) temporary construction compounds each on an area of 9,100 m² to contain site offices, storage containers, banded fuel storage, waste storage, parking areas and security fencing;
- Seven (7) permanent controlled access points on the L61801 and L6184 Local Roads in the townlands of Faughary and Boleyboy to facilitate turbine delivery and construction works which will remain in place after the construction period;
- A temporary crossing of unnamed local road in the townland of Cherrybrook to facilitate turbine delivery vehicles during construction only;
- All associated underground electrical and communications cabling connecting the wind turbines to the on-site substation (the substation is subject to a separate planning application, see details below);
- All related site works and ancillary development including landscaping and soil excavation;
- Biodiversity enhancement areas (218.5 ha) to provide nesting and foraging habitat for birds and other land improvements; and
- Ancillary forestry felling to facilitate construction and operation of the proposed project.

A separate application to obtain approval for a proposed grid connection and substation will be submitted to An Coimisiún Pleanála. This application, and the proposed grid connection application are functionally interdependent and constitute a single project. The proposed grid connection application will seek approval for a 110kV substation and grid connection within the townlands of Curraghfore, Skreeny, Faughary, Amorset, Clooneen, Milltown, Cornastauk, Srabrick, Cloonaquin, Carrigeencor, Boihy, Aghameelta, Kilcoosy, Corrudda, Cleen, Tully, Killeen, Killanummery, Cleighran, Fawn, Drumahaire, Drumlease, and Carrowcrin Co. Leitrim and Lavalley, Drumee, and Ballysumaghan, Co. Sligo.

A Turbine Delivery Route (TDR) along which temporary accommodations may be required are considered in the accompanying EIAR and NIS, and these accommodations are located at the following townlands: Cherrybrook, Cornastauk, Diffreen, Donagh Beg, Donagh More, Knocknaclashagh, Manorhamilton, Moneenshinnagh, Lugnafaghery, Sracreeghan and Meenaphuill (County Leitrim), Barroe, Ballytivnan, Cartron, Cloontyprocklis, Doonally, Drumcliff South, Drumkilsellagh, Grange, Rathquarter, Tully, Willowbrook (County Sligo), and Aighan, Aghayeevoe, Ballymagowan, Beaugreen Glebe, Bruckless, Cashelreagh Glebe, Clarcarricknagun, Coolcholly, Darney, Doonan, Drumlonagher, Dunkineely, Finner, Killybegs, Magheracar, Mullans, Tullyearl, Tullygallan (County Donegal).

A 35-year operational life from the date of full commissioning of the entire wind farm is being sought for all works, and the subsequent decommissioning. The onsite substation and grid connection forming part of the separate grid connection application will remain permanent infrastructure and form part of the national grid network.

The proposed development is likely to have significant effects on the environment of a Member State of the European Communities or other party to the Transboundary Convention (the United Nations Economic Commission for Europe Convention on Environmental Impact Assessment in a Transboundary Context, done at Espoo (Finland), on 25 February 1991) i.e. Northern Ireland, an area of the United Kingdom of Great Britain and Northern Ireland.

This development is covered by the provisions of the Renewable Energy Directive III (Directive (EU) 2023/2413) and it is important to note that this planning application is subject to Section 34D of the Planning and Development Act 2000, as amended. Where a notice issues in accordance with Section 34D(b), the provisions of Article 26A of the Planning and Development Regulations 2001, as amended, shall apply. This application is subject to section 37JA of the Planning and Development Act 2000, as amended (completeness check).

Certain details of the proposed development are unconfirmed in this planning application and an opinion on unconfirmed details from An Coimisiún Pleanála (Case Reference: ACP Ref. 323910-25) pursuant to section 37CD of the Planning and Development Act 2000 (as amended) accompanies this planning application. The details unconfirmed in this application are the turbine tip height, rotor diameter and hub height. The range of parameters under which the turbine dimensions will fall are specified on this site notice.

This planning application is accompanied by an Environmental Impact Assessment Report (EIAR) and Natura Impact Statement (NIS) prepared in respect of the construction, operation and decommissioning of the Proposed Development, the grid connection and TDR accommodation areas. The planning application, including the EIAR and NIS, may be inspected, free of charge or purchased for a specified specific fee not exceeding the reasonable cost of making a copy, during public opening hours for a period of 7 weeks commencing on 21st May 2026 at the following locations:

- The Offices of An Coimisiún Pleanála, 64 Marlborough Street, Dublin 1, D01V902 (9:15 am – 5:30 pm, Monday to Friday excluding public holidays).
- Leitrim County Council, Áras an Chontae, St. Georges Terrace, Carrick on Shannon, Co Leitrim, N41 PF67 (9.30 am to 1.00 pm and 2.00 pm to 4.30 pm, Monday to Friday excluding Bank holidays)

The planning application, including the EIAR and NIS may also be viewed on the following website: www.lissinagroaghplanning.ie

Submissions or observations may be made only to An Coimisiún Pleanála, at 64 Marlborough Street, Dublin 1, D01V902 in writing or online on An Coimisiún Pleanála's website www.pleanala.ie during the aforementioned period of 7 weeks relating to: (i) the implications of the proposed development for proper planning and sustainable development; and (ii) the likely effects on the environment or a European site of the proposed development if carried out.

Any submissions or observations must be accompanied by a fee of €50 (except for certain prescribed bodies) and must be received by An Coimisiún Pleanála not later than 5.30pm on 10th July 2026 and must include the following information: the name of the person making the submission or observation, the name of the person acting on his or her behalf, if any, and the address to which any correspondence relating to the application should be sent; the subject matter of the submission or observation, and the reasons, consideration and arguments on which the submission or observation is based in full (Article 217 of the Planning and Development Regulations 2001, as amended, refers).

Any submissions or observations which do not comply with the above requirements cannot be considered by An Coimisiún Pleanála. An Coimisiún Pleanála may at its absolute discretion hold an oral hearing on the application (For further details see 'A Guide to Public Participation in Strategic Infrastructure Development' on An Coimisiún Pleanála's website www.pleanala.ie). An Coimisiún Pleanála may in respect of an application for permission decide to (a) (i) grant the permission, or (ii) make such modifications to the proposed development as it specifies in its decision and grant permission in respect of the proposed development as so modified or (iii) grant permission in respect of part of the proposed development (with or without specified modifications of it of the foregoing kind) and any of the above decisions may be subject to or without conditions, or (b) refuse to grant permission.

Any enquiries relating to the application process should be directed to the Strategic Infrastructure Section of An Coimisiún Pleanála (telephone no. 01-8588100).

Any person may question the validity of any such decision of An Coimisiún Pleanála by way of an application for judicial review, brought in accordance with Part 9 of the Planning and Development Act 2024 and the applicable Rules of the Superior Courts.

Practical information on the review mechanism can be accessed under the heading "Information on cases / Weekly lists" – Judicial Review of planning decisions, on An Coimisiún Pleanála's website www.pleanala.ie or on the Citizens Information Service website www.citizensinformation.ie.


YourAdNow
ADVERTISING MADE EASY

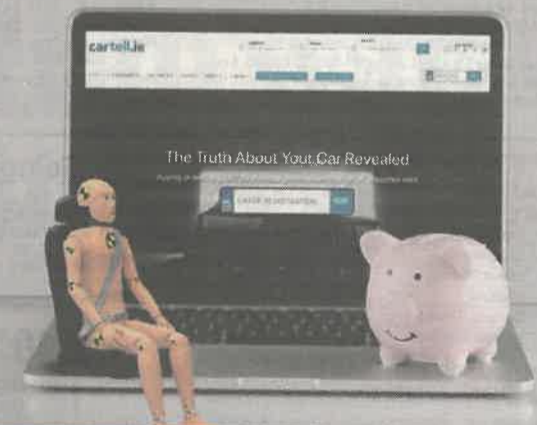



Book your ads online

Place a family notice, legal notice
or sell your goods and services

youradnow.mediahuis.ie

cartell.ie



AIRBAGS AND SAFETY BELTS
PROTECT YOUR BODY
LET CARTELL PROTECT
YOUR INVESTMENT

A Cartell History Check Includes Outstanding
Finance, Mileage History Previous Write-Offs, UK
History, Number of Owners, Car Valuation and
much more.

ENTER THE REG AT
CARTELL.IE NOW

We have many cars.

CarsIreland.ie

No funny business.

